



Quick Start Guide

TS-1 Series Active
Acoustic System





Quick Start Guide

TS-1 Series Active
Acoustic System

Important:

Please review and fully understand these instructions prior to installation or operation.

For further assistance or additional information, please contact Wenger Corporation.

wengercorp.com | 800.4WENGER (493.6437)

Important Safety Information


Before operating the Transcend unit, please read and fully understand this Quick Start Guide and retain these instructions for future reference.

Observe all warnings and follow all safety guidelines.

Electrical Shock Hazard

To reduce the risk of electrical shock, fire, or injury:

- Do not open the unit. There are no user-replaceable components inside. All service must be performed by qualified personnel. If service is required, please contact Wenger Corporation.
- Avoid moisture. Do not use the unit outdoors or in environments with high humidity or condensation. Do not allow water or liquids to contact the unit. If the device has been exposed to moisture or shows signs of liquid damage, discontinue use immediately and contact Wenger Corporation for service.
- Do not operate without fuses or without the fuse holder installed.
- Fuse replacement: Always unplug the unit before removing the fuse holder. Replace only with a fuse of the same type and rating.
- Power cord protection: Ensure the power cord is not subject to damage from sharp edges, pinch points or other hazards.
- Safety symbols: Labels on the product and user manual may include the following safety symbol:

 Lightning bolt symbol: Lightning flash with arrowhead symbol within an equilateral triangle. This is intended to alert the user to the presence of un-insulated dangerous voltage within the product's enclosure that may be sufficient to constitute a risk of electric shock to persons.

Electrical Requirements

Ensure that the power source complies with product specifications and applicable national electrical standards.

- This device must be connected to a grounded mains outlet. Do not remove or bypass the ground prong on the power cord. Operating without a proper ground can result in electric shock or severe injury.
- Connect only to AC power rated at 110–240 V, 50–60 Hz.
- Do not attempt to increase voltage by connecting two live wires of a 120 V multiphase system.

- Circuit protection: Only connect to a power source equipped with a circuit breaker.
- Generator use: Do not use with non-inverter generators.
- Do not bypass or defeat the safety features of the polarized NEMA plug.
- Do not use the device if the power cable is damaged.

Operating Environment

- Do not operate this device outside of its intended operating temperature.
- Keep away from open flames, such as lit candles.
- Avoid placing the device near heat sources (e.g., radiators, stoves, heat registers), which may cause overheating or shorten the product's lifespan.
- Do not expose the device to direct sunlight.

Avoid Radio and Electromagnetic Interference

This device has been tested and complies with part 15 of the FCC rules. These limits are designed to provide reasonable protection against harmful interference from electrical equipment, but do not guarantee that interference will never occur.

Cleaning Instructions

- Always unplug the device before cleaning.
- Do not use alcohol-based cleaners, as they may degrade or fog plastic components, including the touchscreen and processor enclosure.
- Use only water or non-abrasive cleaning agents, such as lens or electronics wipes.
- Apply cleaning solution to a cloth, never directly to the device, doing so may allow moisture to enter the device and pose a risk of electric shock or internal damage.

Conformity

Certifications and the Declaration of Conformity for the TS-1 family can be found in the complete user manual.

WEEE Compliance Notice



This appliance is labeled in accordance with European Directive 2012/19/EU concerning Waste of Electrical and Electronic Equipment (WEEE).



This label indicates that this product should not be disposed of with household waste. It should be deposited at an appropriate facility to enable recovery and recycling.

Welcome to a New Level of Inspiration

Thank you for choosing the Transcend Acoustic System

This product represents over 30 years of dedicated research and development by our team of expert engineers with a deep passion for audio and acoustic technology. Designed to support and elevate creativity, it is our hope that it will help inspire the next generation of musicians around the world.

Each Transcend unit undergoes rigorous precision testing prior to leaving our facility to ensure it arrives in optimal condition and ready to perform.

Inside the Box:

Transcend Processor

- 1 Transcend Processor
- 1 IEC Power Cable
- 1 Cat 5e Ethernet Cable
- 2 Removable Rack Ears
- 4 Rubber Feet
- 1 Quick Start Guide
- 4 #10-32 Rack Screws
- Required Phoenix Connectors

Transcend Control Panel

- 1 Transcend Control Panel
- 1 Mounting Ring
- 4 #6-32 Screws
- 1 Security Set Screw
- 1 USB-C Dust Cover

If any components are missing or appear to be damaged upon delivery, please contact the Wenger Corporation immediately. Retain all packaging materials showing signs of damage for inspection by the shipping carrier.

Wenger Corporation reserves the right to modify product specifications and documentation content without prior notice as part of our commitment to continuous improvement and evolving industry standards.

To access the most up-to-date documentation and software, visit: wengercorp.com/transcend.

A complete user manual may be found online.

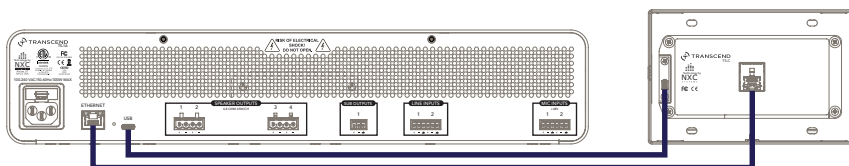
Installation

If this device was purchased as part of a complete system, please refer to the separate installation guide included in the box.

If the guide is missing or has been misplaced, all manuals and documentation are available for download at: wengercorp.com/transcend.

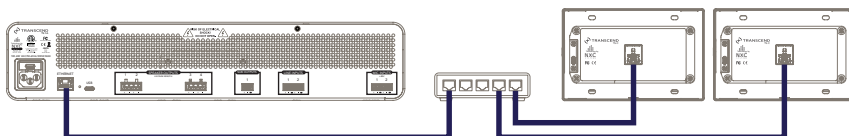
Connecting the Control Panel

Direct Connection: The Transcend TS-C Control Panel can be powered directly by a TS-1 Series Processor using a standard Ethernet cable.



To enable recording to a USB drive via the control panel, a USB-C cable must be connected from the TS-1 Series Processor to the TS-C Control Panel. Please note that USB-C cables typically have a maximum effective length of 20' (6096 mm). If the control panel is located beyond this distance and a USB-C connection is not possible, install the included dust cover over the USB-C port to prevent confusion or improper use.

Network Connection: TS-1 Series Processors may be operated by multiple TS-C Control Panels at the same time over a local network. Each control panel must be powered via Power over Ethernet Plus (PoE+) using either a PoE+ network switch or PoE+ injector.



Note: The network must support DHCP. Connections through non-managed switches is not supported.

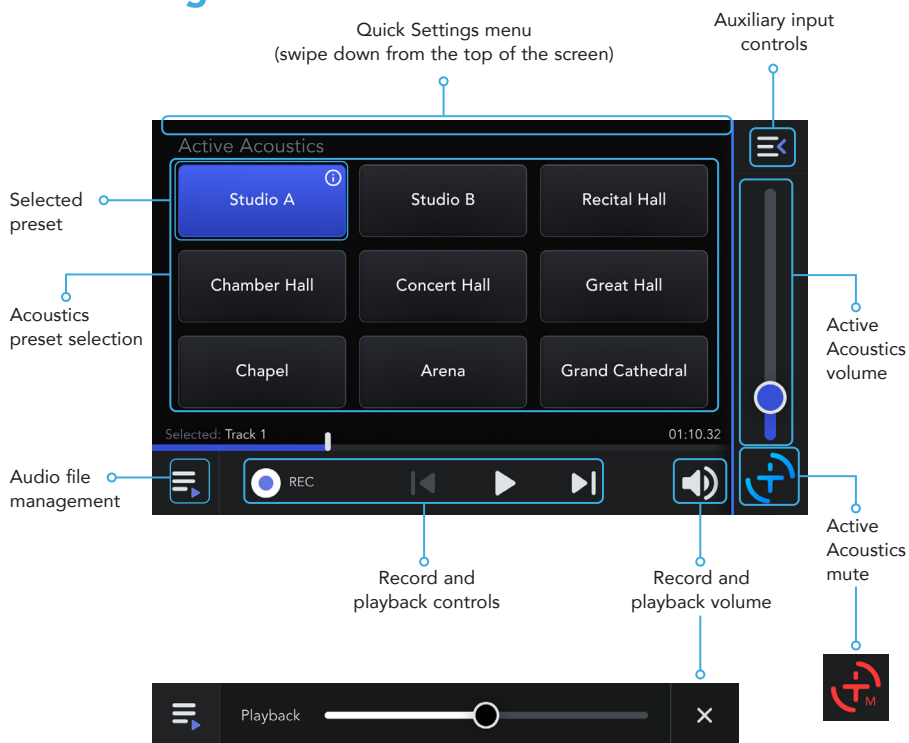
First-Time Startup and Calibration

Follow the on-screen instructions to complete the initial setup and calibration.

As part of this process, the device will perform an automatic calibration.

During calibration, do not block or place any objects in front of the microphones or speakers, as this may affect system performance and accuracy.

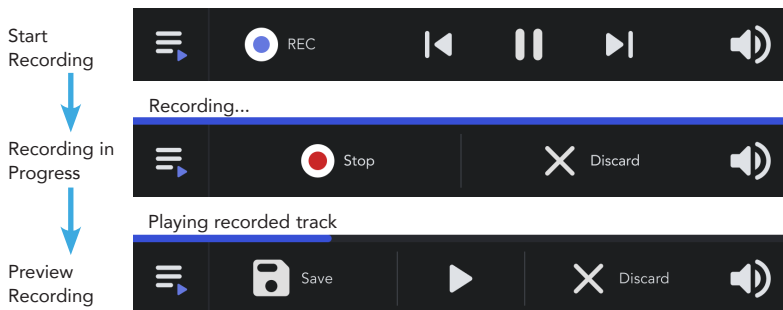
Home Page



Note: Selecting the active preset will display a description of the acoustic setting.

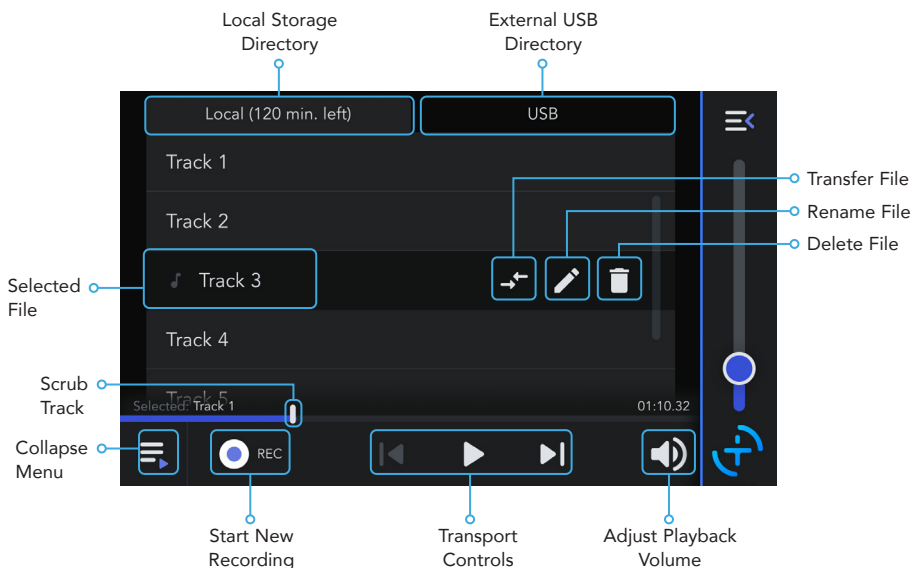
Create a New Recording

Press "REC" to start a new recording and "Stop" to end the recording. If a USB storage device is connected to the system it will automatically record directly to the USB device.



- The Play/Pause icon previews the recording without saving it.
- "Save" stores the recording and adds it to the Track List.
- "Discard" permanently deletes the recording.

Manage Audio Files



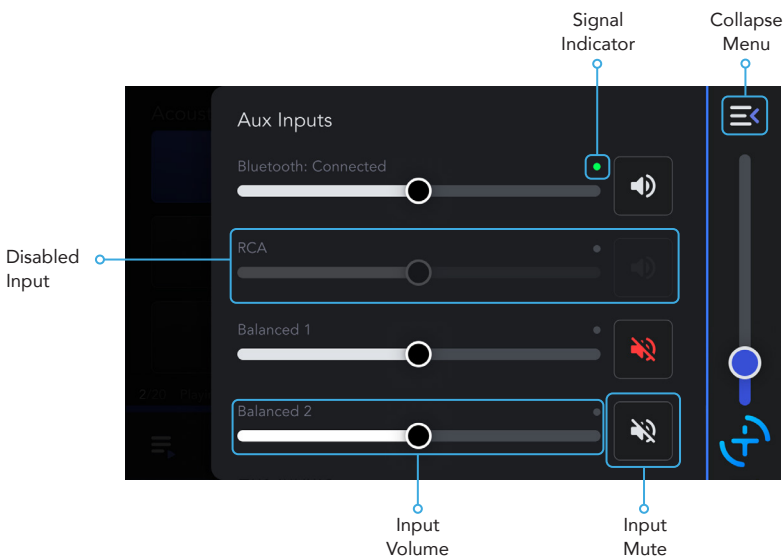
USB Recording and Playback

When a USB storage device is connected to the Transcend system, it will automatically create a directory named "Transcend" on the drive.

All recordings made by the system will be saved within this folder as a .WAV audio file. Additionally, external .WAV audio files placed in the "Transcend" folder may be played back through the system.

Note: Transcend does not support compressed audio formats such as MP3 or AAC. Transcend supports NTFS, EXFat, or FAT32 file systems.

Adjust Auxiliary Inputs

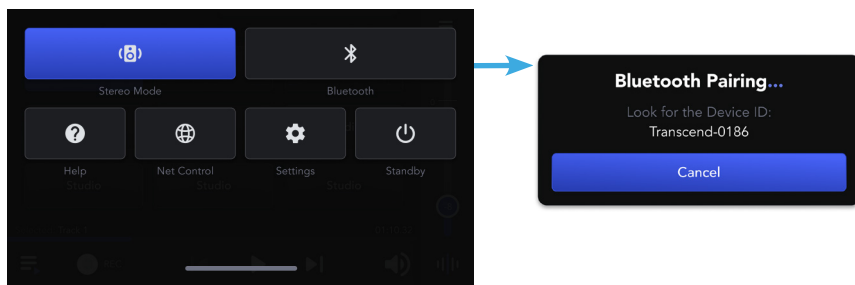


Note: Auxiliary input names and configurations can be changed in the system settings.

Bluetooth Pairing

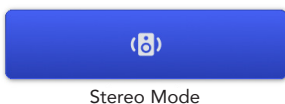
To access Bluetooth settings, swipe down from the top of the screen to open the Quick Settings panel.

Tap the Bluetooth icon to initiate pairing mode, and display the device's Bluetooth ID. Follow the instructions for your phone, tablet or computer to add the Transcend TS-1 as an audio device.



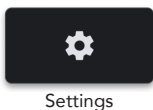
Note: Transcend can pair with only one device at a time and will retain only the most recently connected device. This design helps prevent unwanted device pairing.

Enable Stereo Mode



Playback, Auxiliary and Bluetooth audio inputs may be routed to all speakers simultaneously, or a stereo L / R pair. Note that this option may be unavailable for some systems.

System Settings



Transcend offers customizable configuration options that may be tailored for each installation. Access to the Settings menu is secured by a 5-digit numerical passcode to prevent unauthorized changes.

The default passcode is "12345." For installations in public or shared environments, it is strongly recommended to change this passcode and securely record it in a location you can easily access.

If you need to reset the passcode, please contact Wenger Corporation for recovery assistance and instructions.

Power Off the System



Standby

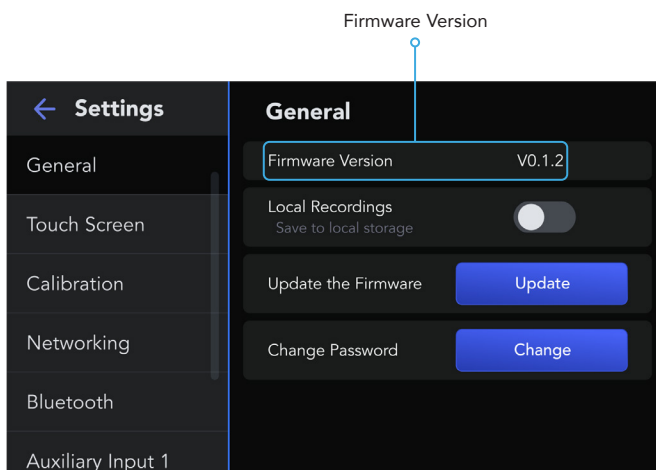
Select the "Standby" icon to place the system into a low-power state, conserving energy.

To wake the system, simply touch anywhere on the screen.

Firmware Version and Updates

The firmware version is displayed on the General page within the User Settings and Configuration menus.

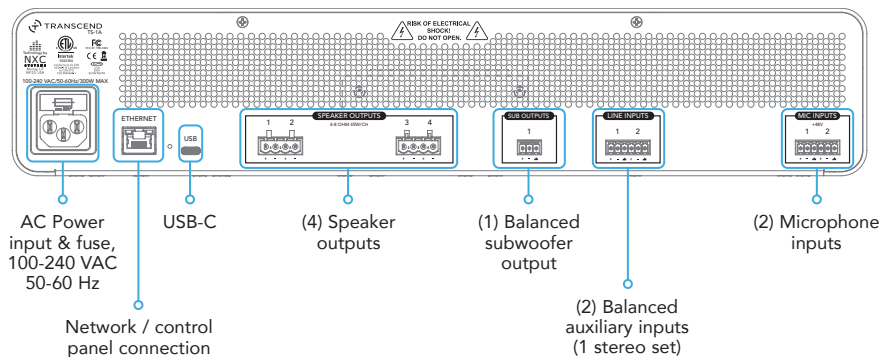
To check for the latest firmware version and access update instructions, scan the QR code below.



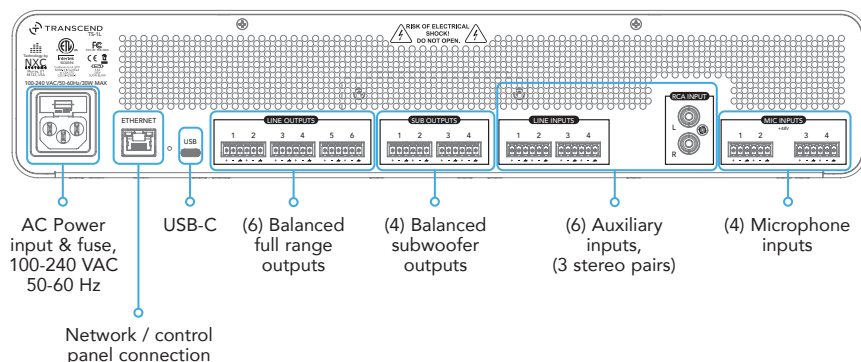
Scan to access the complete Reference Manual, firmware update files and more.

Inputs and Outputs

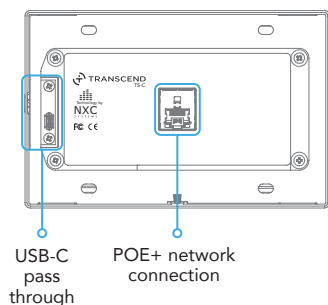
TS-1A Amplified Model I/O



TS-1L Line Out Model I/O



TS-C I/O



Note: Some connections have unique features and limitations. Reference the complete manual for additional information.

Notes:

Wenger®

C O R P O R A T I O N

Wenger

GEARBOSS

LIFEfish

CLANCY

creative
conners



TSC

TEXAS
SCIENTIFIC
COMPANY

© Wenger Corporation 2026
Printed in USA 2026-01 Part #290A203-02
wengercorp.com | 800.4WENGER (493.6437)